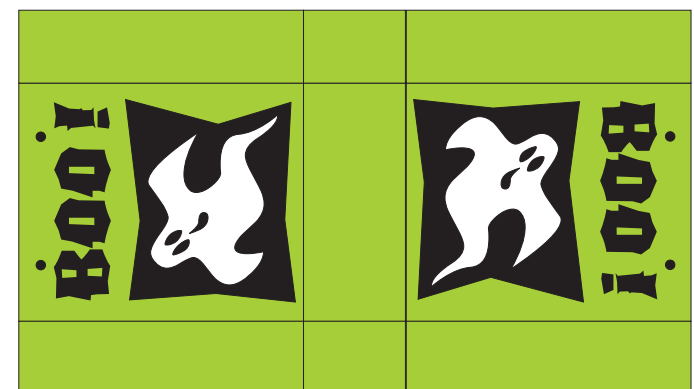
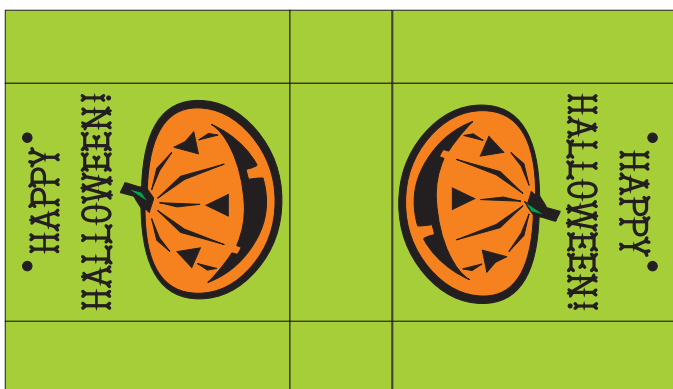
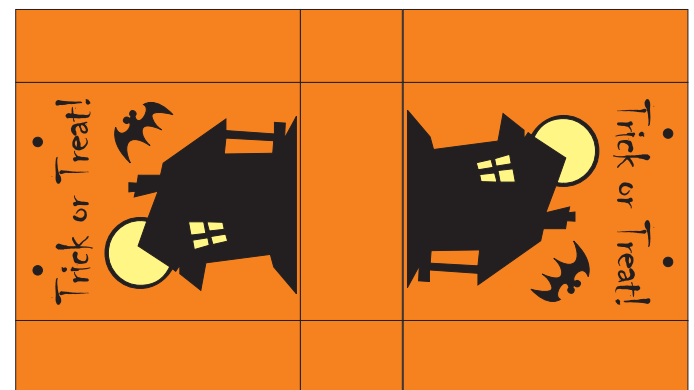
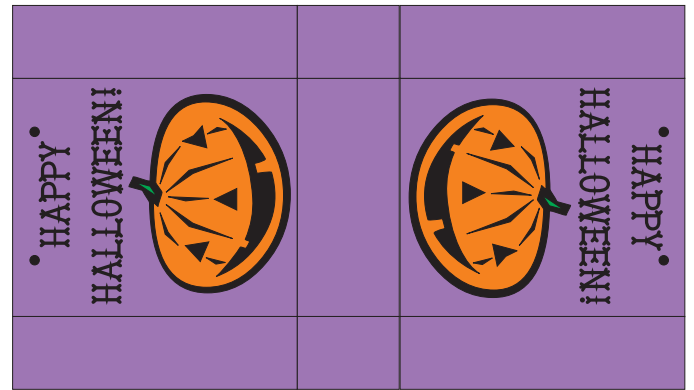
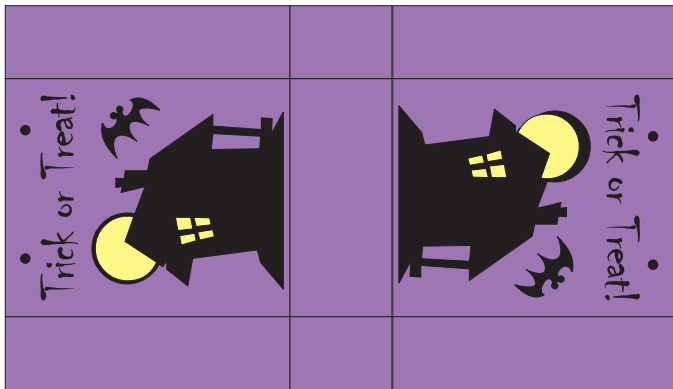
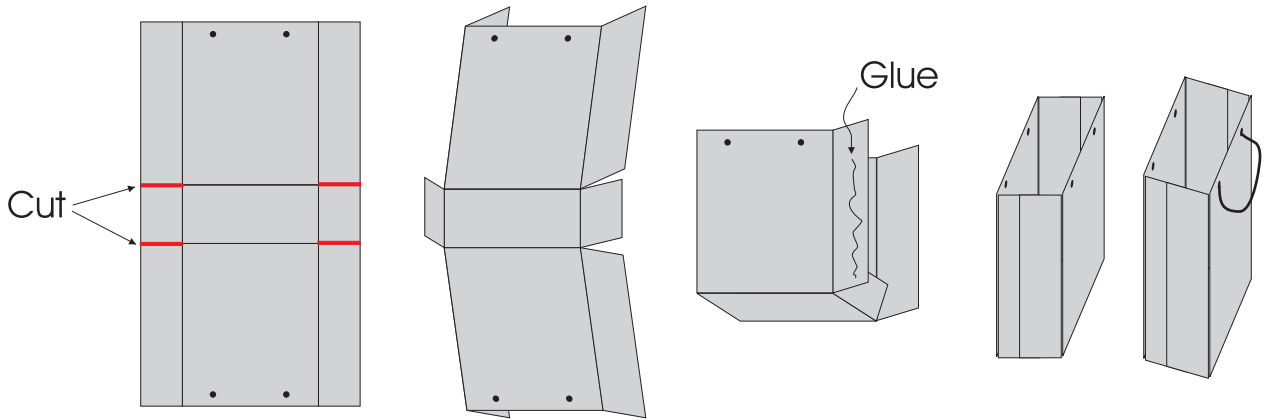


Happy Halloween 2012!

TES Tiny Eclectic Studio

Where small wonders come to life tinytes.com

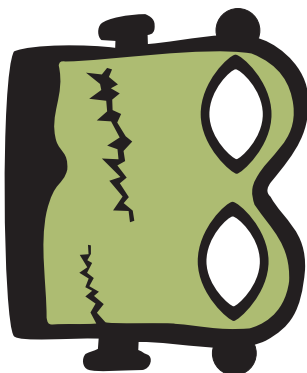
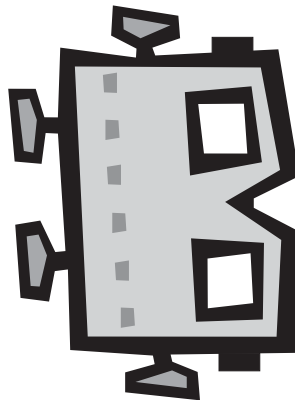
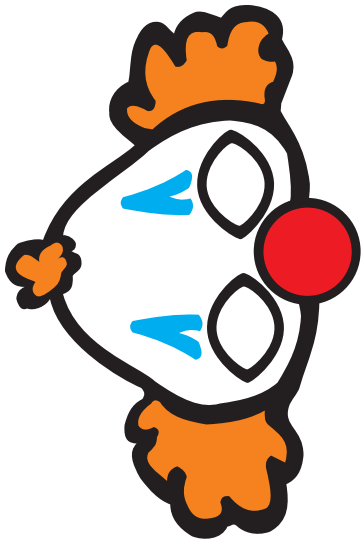
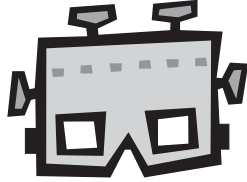
- Cut out bags and carefully poke holes at the black dots.
- Cut small snips at the bottom corners. (Red lines in diagram below.)
- Fold front and back of bag up, fold sides in.
- Fold bottom flaps in.
- Glue sides together.
- Attach floss, ribbon or string for handles.



Happy Halloween 2012!

TES Tiny Eclectic Studio

Where small wonders come to life tinytes.com



Cut out mask and eyeholes.
Measure elastic to fit your doll's head,
Attach elastic to mask.