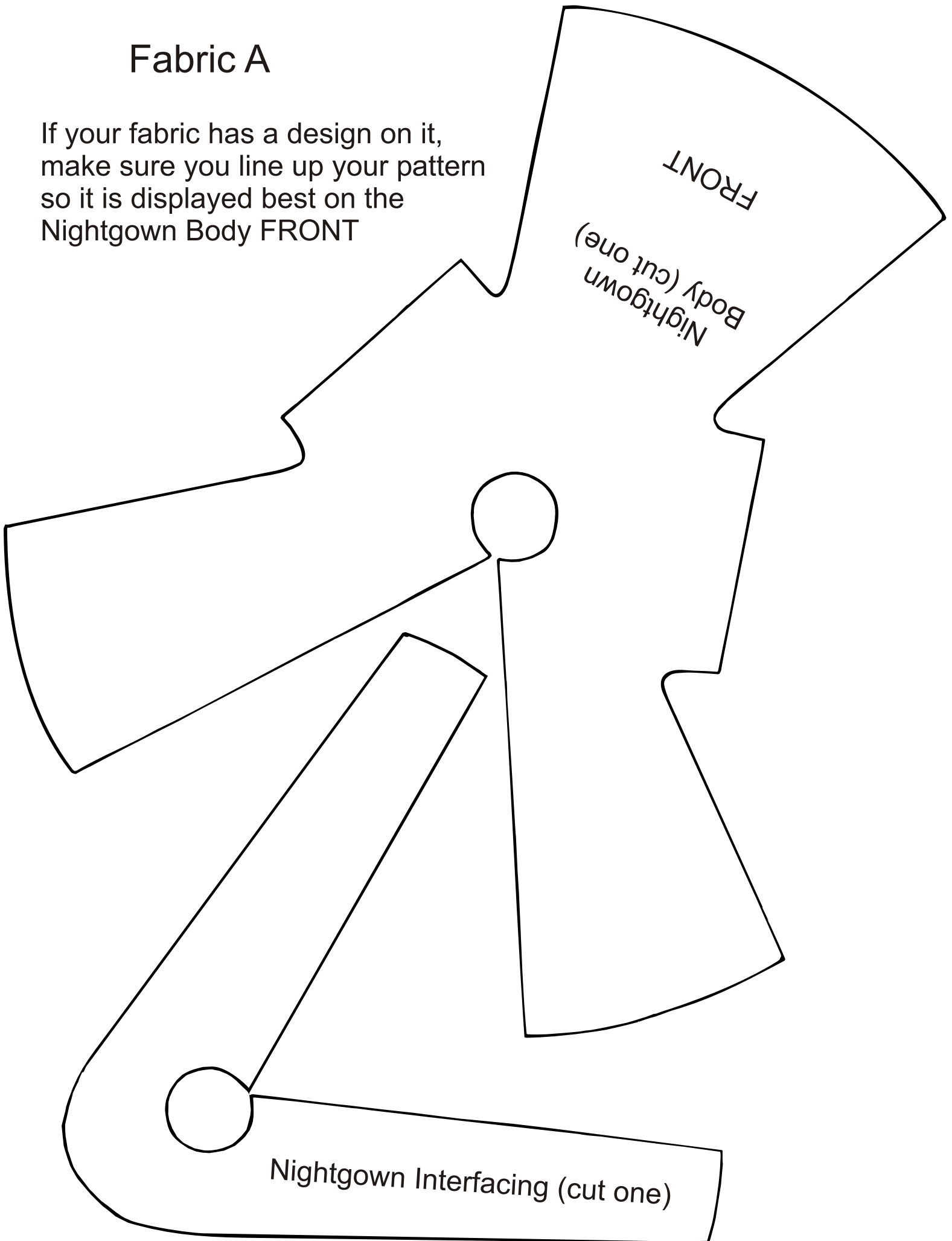


Fabric A

If your fabric has a design on it,
make sure you line up your pattern
so it is displayed best on the
Nightgown Body FRONT



Fabric B

Pay attention to your fabric design here too, you probably want all three pieces in the same direction.

Nightgown Bottom Ruffle (cut one)

Nightgown
Sleeve Trim (cut two)

(I have two sleeves here, because some people prefer the "cut two" method, and others want a pattern piece for each, even if they are the same.)

If you would rather just measure out the straight pieces:

Nightgown
Sleeve Trim (extra)

Bottom Ruffle = $1\frac{1}{2}$ " x 9"

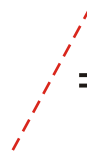
Sleeve Trim = $\frac{3}{4}$ " x 2"

You don't have to use two different fabrics!
They are very cute in a single color too.
I just separated them in case you want a different color for the trim, so it's easy to see which are which!

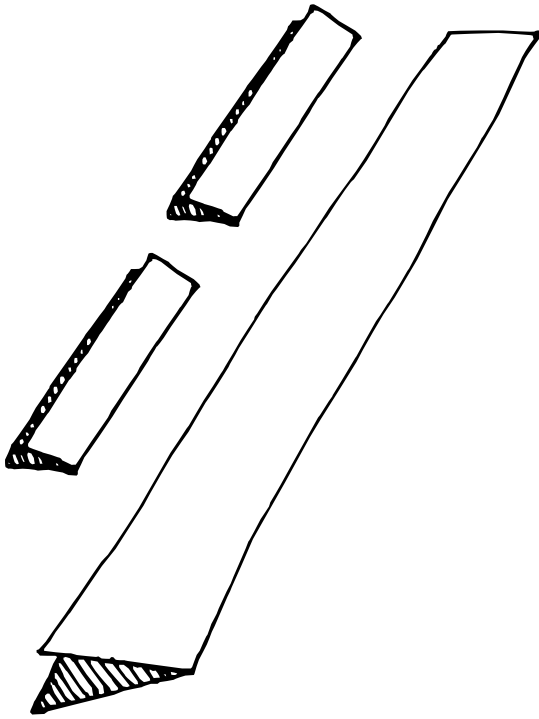
*NOTE: This pattern makes a very cute dress also, it doesn't have to be a nightgown! Use your imagination, different fabrics will turn this into lots of different looks. Use it backwards as a robe or long coat...The possibilities are endless!



= wrong side of fabric

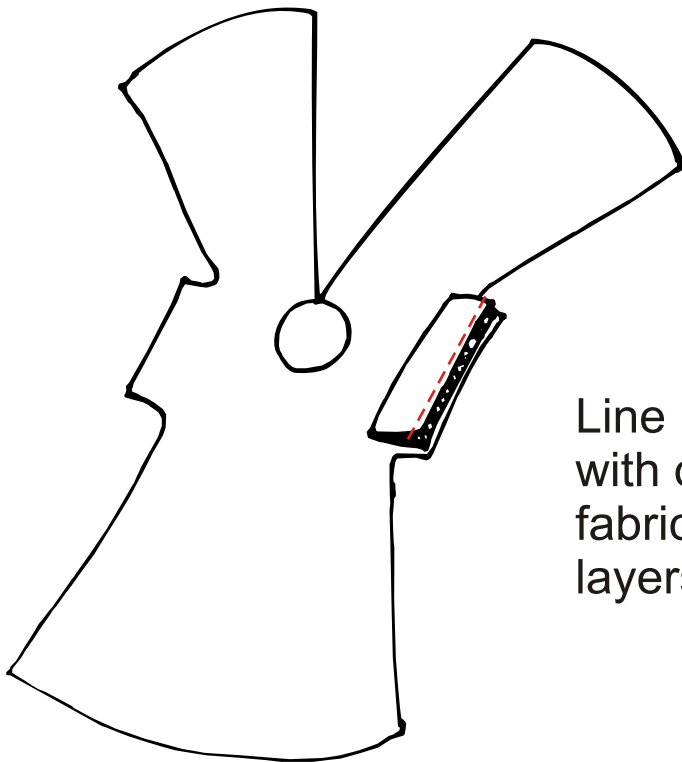


= stitch line

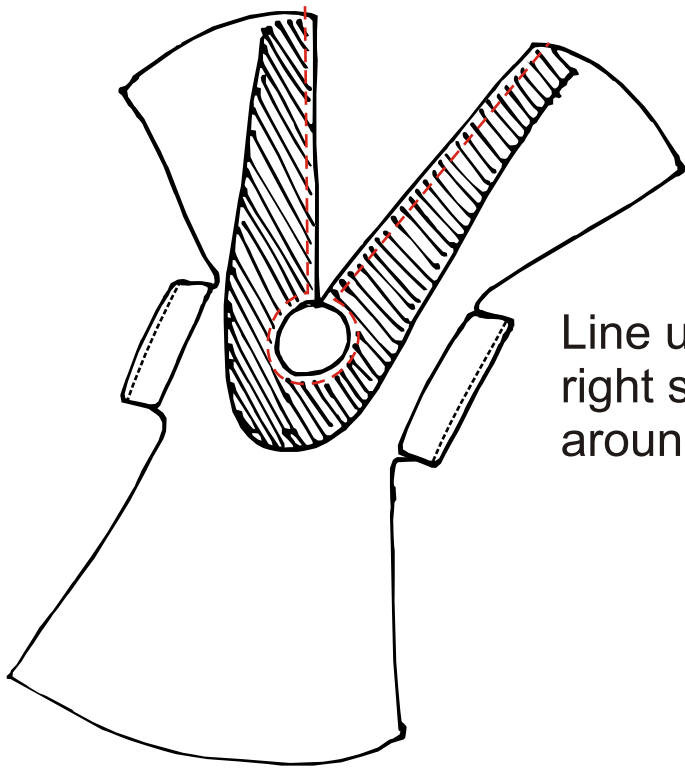


Fold each sleeve trim piece in half lengthwise, with right side of fabric facing out. Iron flat.

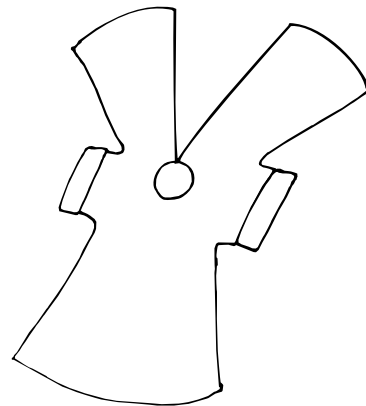
Repeat with bottom ruffle, set aside.



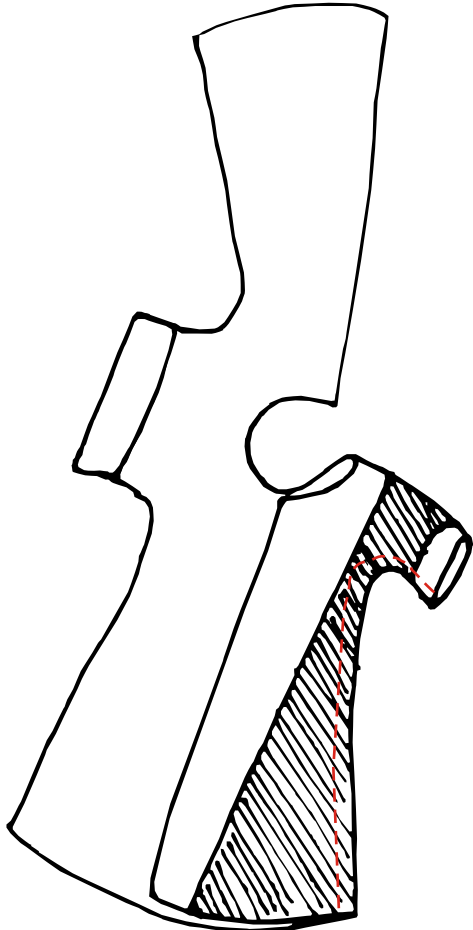
Line up open edge of folded sleeve trim with outer edge of sleeve, with body fabric facing right side up. Stitch all 3 layers together. Repeat with other side.



Line up body piece with interfacing, with right sides together. Stitch up one side, around neck opening, and down the other side.

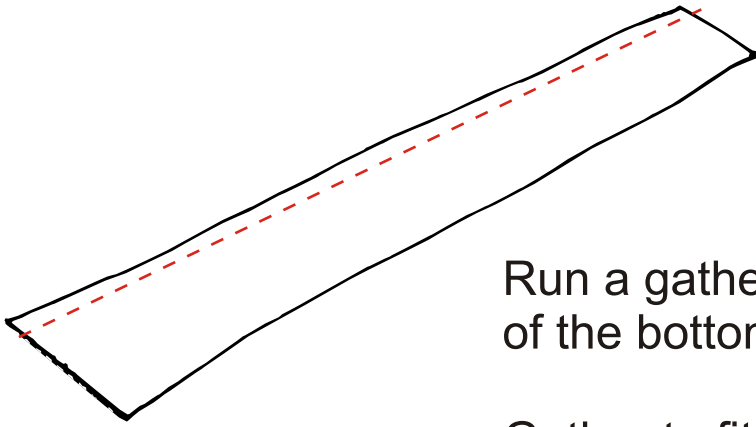


Clip curves and turn right side out. Press flat, and press sleeve trim out.



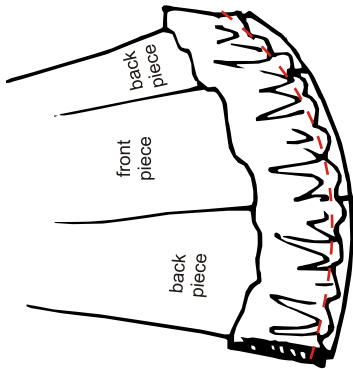
Fold one side over at shoulder, lining up sleeve edges and bottom. Stitch bottom edge of sleeve, under arm and all the way down the side. Repeat with other side.

(I always start at the sleeve on this step... if it doesn't line up perfectly at the bottom, you can always trim it a bit before you add the ruffle. But if the sleeve doesn't line up it will be noticeable!)



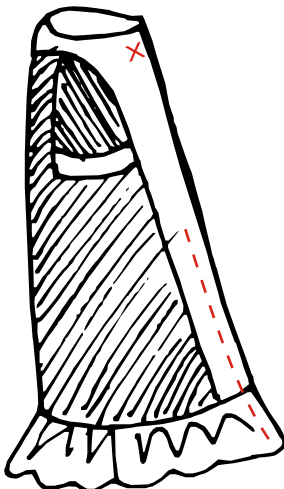
Run a gathering thread along the open edge of the bottom ruffle. (Go through both layers.)

Gather to fit the bottom edge of the nightgown.



Open out nightgown and lay flat. Line up gathered edge of ruffle with bottom edge of nightgown, with right sides together. Stitch along bottom edge.

Press ruffle down.



With right sides together, stitch back pieces together from bottom of ruffle, to about halfway up.

Clip curves, turn right side out. Sew a snap or button at the red X, and you are done!

You can decorate with lace, beads, embroidery, anything you want! Experiment with lots of pretty ideas, you can do a lot with these! Have fun!