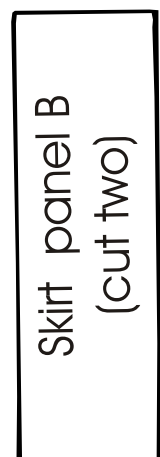
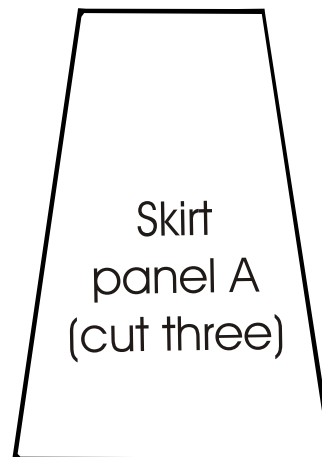
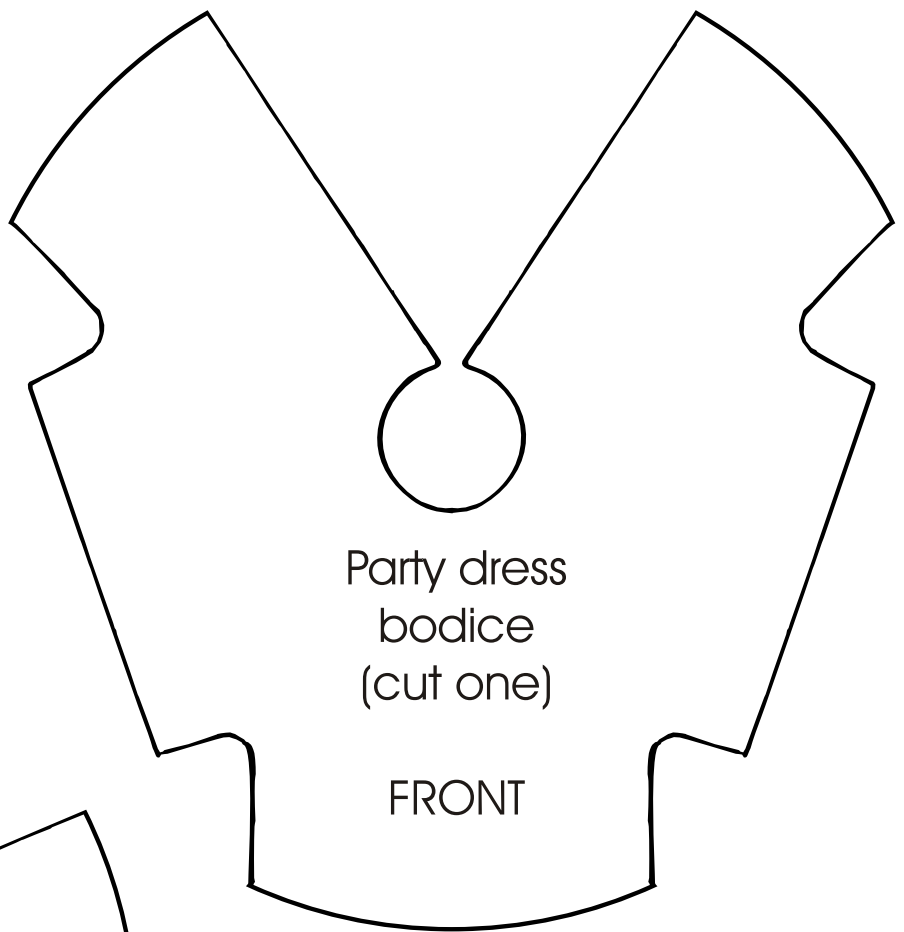
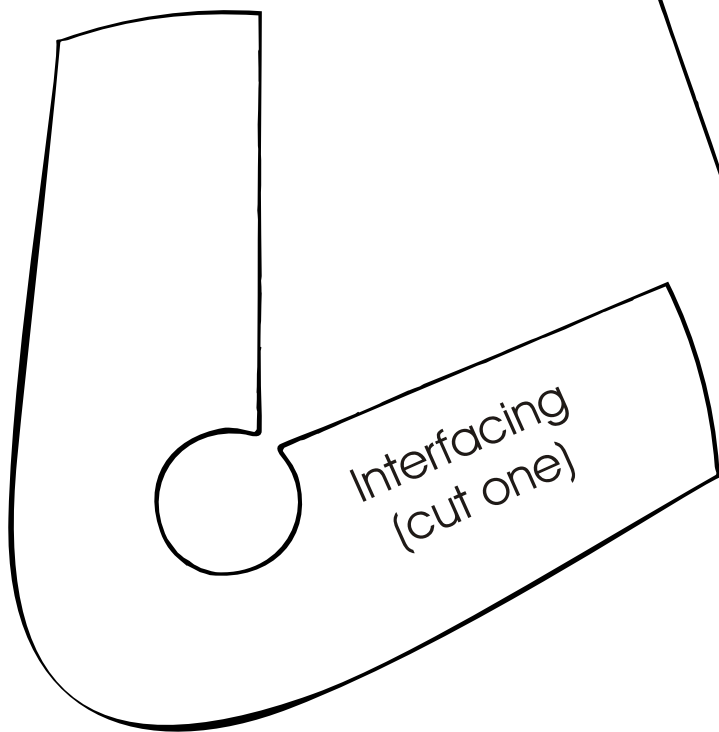
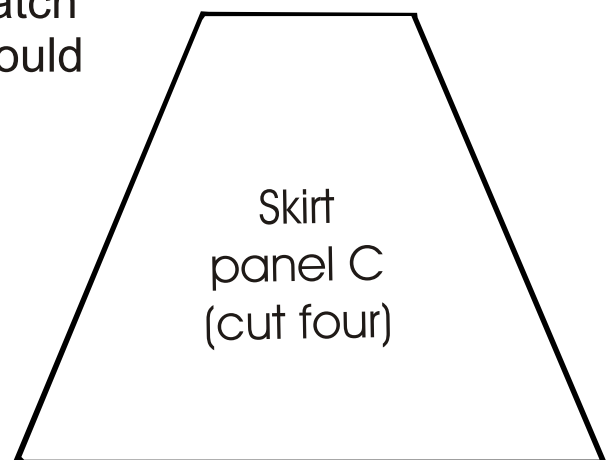


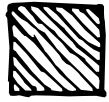
If your fabric has a design on it, make sure you line up your pattern so it is displayed best on the FRONT



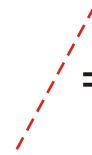
I used a contrasting fabric for the sleeve ruffles & skirt panel C...to match her little date's shirt! I think these would look really good in lace also!!



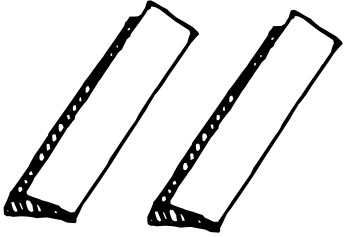
INSTRUCTIONS:



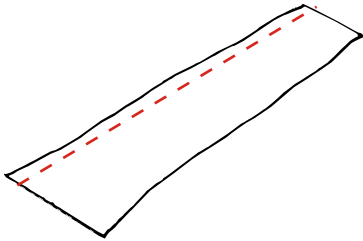
= wrong side of fabric



= stitch line

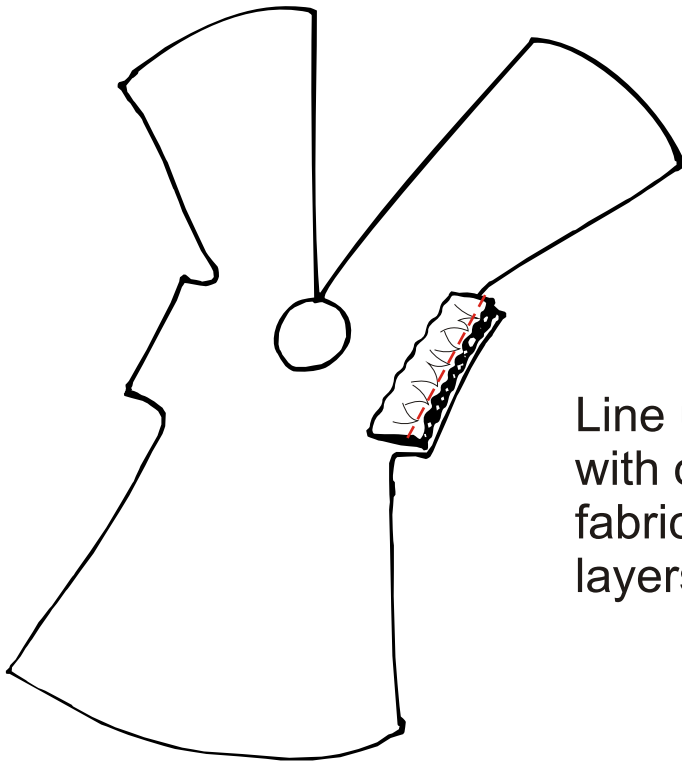


Fold each sleeve ruffle piece in half lengthwise, with right side of fabric facing out. Iron flat.

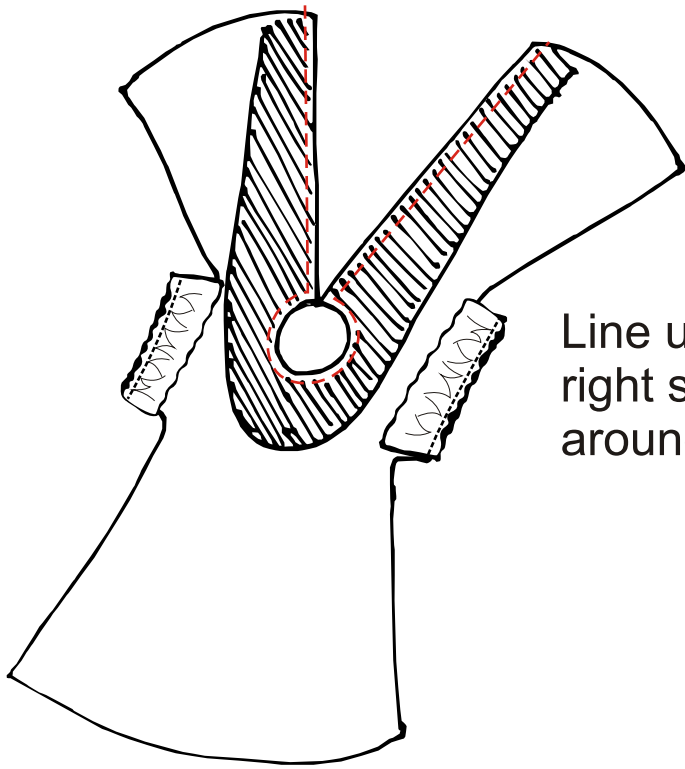


Run a gathering thread along the open edge of each sleeve ruffle. (Go through both layers.)

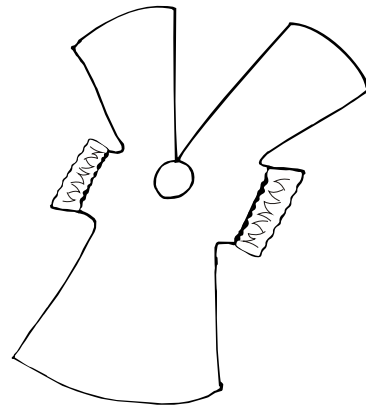
Gather to fit the edge of the sleeve.



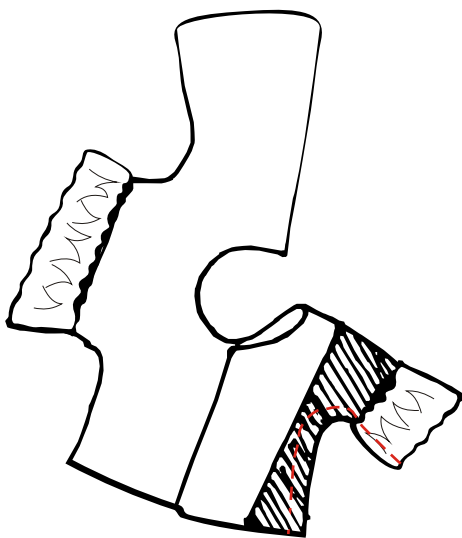
Line up open edge of folded sleeve trim with outer edge of sleeve, with body fabric facing right side up. Stitch all 3 layers together. Repeat with other side.



Line up body piece with interfacing, with right sides together. Stitch up one side, around neck opening, and down the other side.

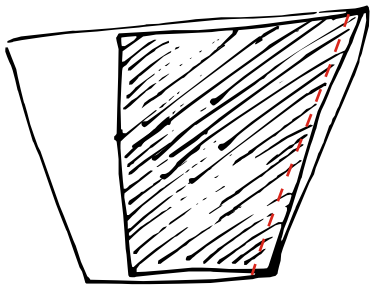


Clip curves and turn right side out. Press flat, and press sleeve trim out.

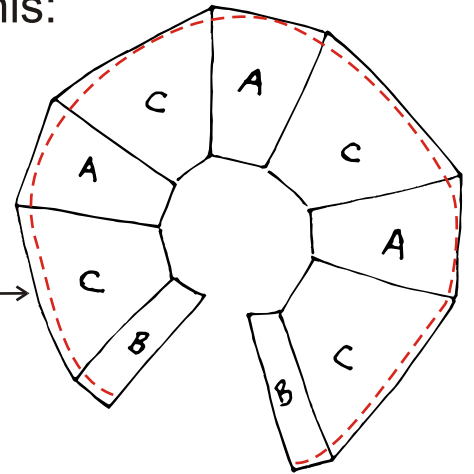


Fold one side over at shoulder, lining up sleeve edges and bottom. Stitch bottom edge of sleeve, under arm and all the way down the side. Repeat with other side.

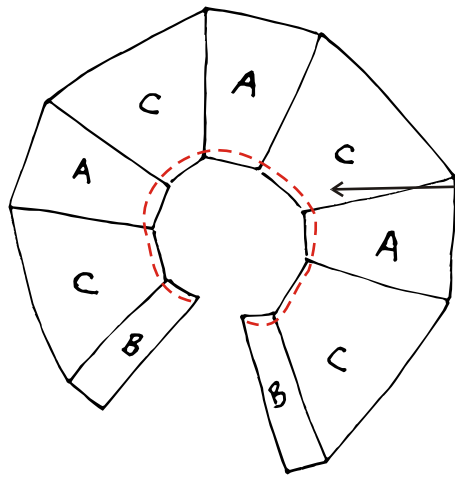
(I always start at the sleeve on this step... if it doesn't line up perfectly at the bottom, you can always trim it a bit before you add the skirt. But if the sleeve doesn't line up it will be noticeable!)



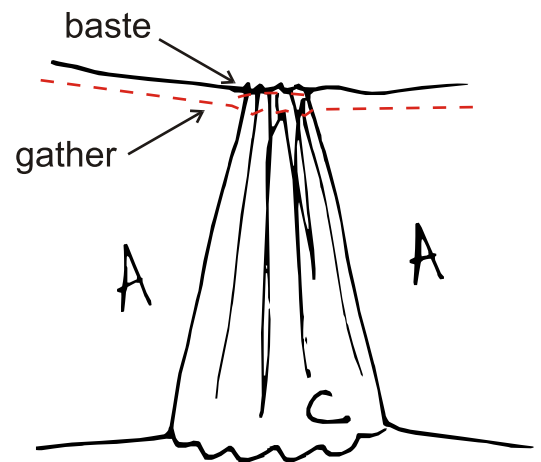
Sew your skirt panels together, right sides facing, alternating as you go. Start and end with a “B” panel. Do not join the “B”s together. You should end up with a circle like this:



Turn, press and hem the outer edge, adding lace if you want to.

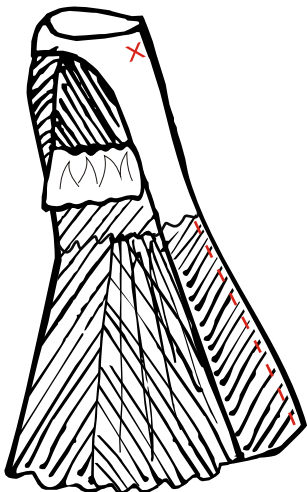


Run a gathering stitch along the inner edge.



Gather each “C” panel tightly and baste together. Do not disturb the gathering stitch!

Then gather the whole skirt to fit the bottom edge of the bodice. Line up the “B” panels with the sides of the bodice. Stitch together with right sides facing.



With right sides together, stitch the two “B” skirt panels together.

Clip curves, turn right side out. Sew a snap or button at the red X, and you are done!